



Monopolar RF Dissolving Machine

Before using the machine, be sure to read the instruction manual carefully and follow the instructions.

Product introduction

Welcome to choose our newest product: Jisu ID Fat Dissolving Machine, a state-of-the-art, radio frequency energy-based therapy with real-time temperature control. Jisu ID Fat Dissolving Machine is a non-invasive, comfortable mono-polar radio frequency (RF) device that offers unique handle placement versatility to treat the entire abdomen or multiple body areas simultaneously. It is fast, reliable, comfortable and clinically proven to permanently eliminate stubborn fat cells in areas such as abdomen, flanks, arms, bra straps, legs, double chin and knees. In addition to reducing fat, RF energy can also promote collagen regeneration, improve skin sagging and wrinkles, improve the overall contour of the face and jaw line, and make the face and body skin firm and smooth, reducing fat, shaping and firming. The device is equipped with 10 unique radio frequency device treatment handles, and different handles are applied to different parts. No consumables, no pain, no downtime, return to normal activities and exercise immediately.

The most special 6 flat fixed treatment handles and 2 handles flat fixed treatment handles break through the traditional radio frequency mobile operation, bringing a safe, efficient, fast and most comfortable experience, and can be easily used without an operator.

Working principle

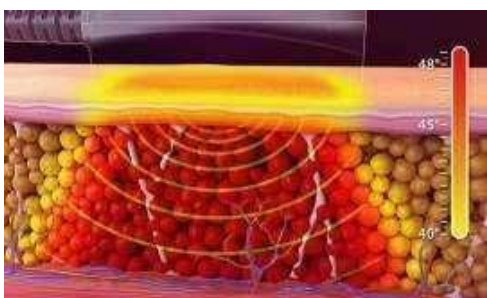
Jisu ID Fat Dissolving Machine uses mono polar radio frequency (RF) deep heating as its core technology, using controlled mono polar radio frequency (RF)

technology to provide targeted heating to large and small areas without damaging the skin. The fat and dermis are heated to 43-45°C through radio frequency devices of different shapes, which continuously generates heat and burns fat cells, making them inactive and apoptotic. After several weeks to several months of treatment, the apoptotic fat cells will pass through the body. Gradually metabolically excreted, the remaining fat cells are rearranged and compressed, and the fat layer is gradually thinned, reducing the fat by an average of 24-27%. At the same time, the heat can stimulate the regeneration of collagen in the dermis, the elastic fibers naturally produce immediate contraction and tightening, and repair the connective tissue, so as to achieve the effect of dissolving fat and sculpting the body, tightening the cheeks and eliminating the double chin.

Operation Mode



Use 2MHZ mono polar radio frequency to deliver even energy to the fat layer and then maintain a comfortable skin temperature. Allows you to treat multiple areas of the body simultaneously for maximum results and patient satisfaction.



Real-Time Temperature Control: Continuously monitors skin temperature and automatically adjusts energy delivery to comfortably heat and maintain skin to 45°C while surface temperature remains 5-6°C cooler than deep fat temperatures.



Fat heating selectivity: Optimized energy delivery and heating enhance selective apoptosis within subcutaneous adipose tissue.



On average, 24-27% of fat cells are irreversibly damaged.



Over a 12-week period, damaged fat cells were slowly broken down and eliminated from the treated subcutaneous adipose tissue.



About 24 percent of the fat cells were irreversibly damaged 12 weeks after treatment, causing them to be excreted by the body.

Advantage

1. Non-invasive and non-ablative.
2. The discomfort of this therapy is minimal, which can be compared with hot stone massage.

- 3.No consumables, non-invasive and painless, no anesthesia, no side effects, no recovery period, you can do whatever you want without affecting your normal work and life.
4. It is easy to use without an operator, and it is simple and safe.
- 5.Simultaneous treatment of multiple areas, 6 (flat fixed) hands-free handles that can cover 300cm² at the same time on the abdomen and both sides.
- 6.Special hand-held handle, suitable for smaller and more sensitive parts of the body, such as side breasts, double chin, face.
- 7.Maintain the subcutaneous temperature of the treated area evenly throughout the procedure.
- 8.Removes fat from the treated area while rejuvenating and firming the skin.
- 9.The system features an intuitive interface and a range of handles to customize treatment, whether for multiple hands-free areas or a single handle area for treatment.
- 10.Intelligent temperature control system, the radio frequency energy delivery is dynamically adjusted based on the continuous monitoring of the skin temperature, and the intelligent temperature control is within the set comfortable temperature, which can safely and effectively avoid tissue damage.
- 11.Real-time temperature detection system, real-time display of skin temperature during treatment, more intimate and more assured.

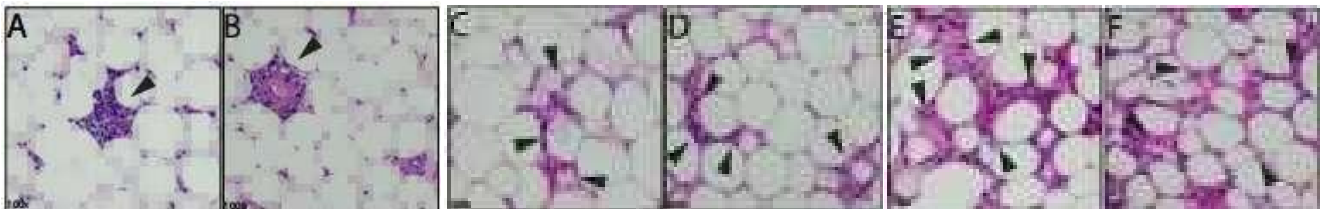
Experiment Result

1. Clinical histology shows that Jisu ID Fat Dissolving Machine is clinically proven to cause inflammation and fat necrosis to a depth of 1.5 cm below the dermis. Histology research were complemented by clinical studies showing an average 26% reduction in fat as measured by ultrasound.



·Ultrasound measurement showed:
2.9mm fat loss or 26%.

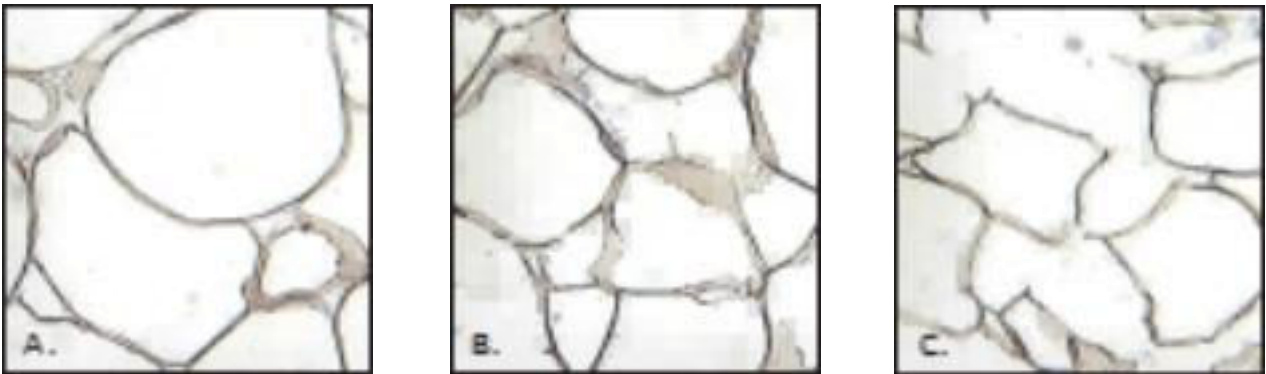
·Histology: 30 days after treatment showed inflammation and fat necrosis extending from the sub-dermis (black arrow) to a depth of 1.5 cm (labeled A-F).



·(30 days after treatment) sections showing 100X magnification: A and B show lobular inflammation within the fat lobule with properties lymphocytes and neutrophils, C and D show areas of inflammation and degenerated adipocyte membranes, E and F show degeneration Adipocytes, adipocytes, and neutrophils and lymphocytes associated with fat necrosis.

2. Jisu ID Fat Dissolving Machine features an optimized RF frequency and delivery method to achieve selective, targeted destruction of subcutaneous adipose tissue (Picture 1), while maintaining a low average surface temperature.

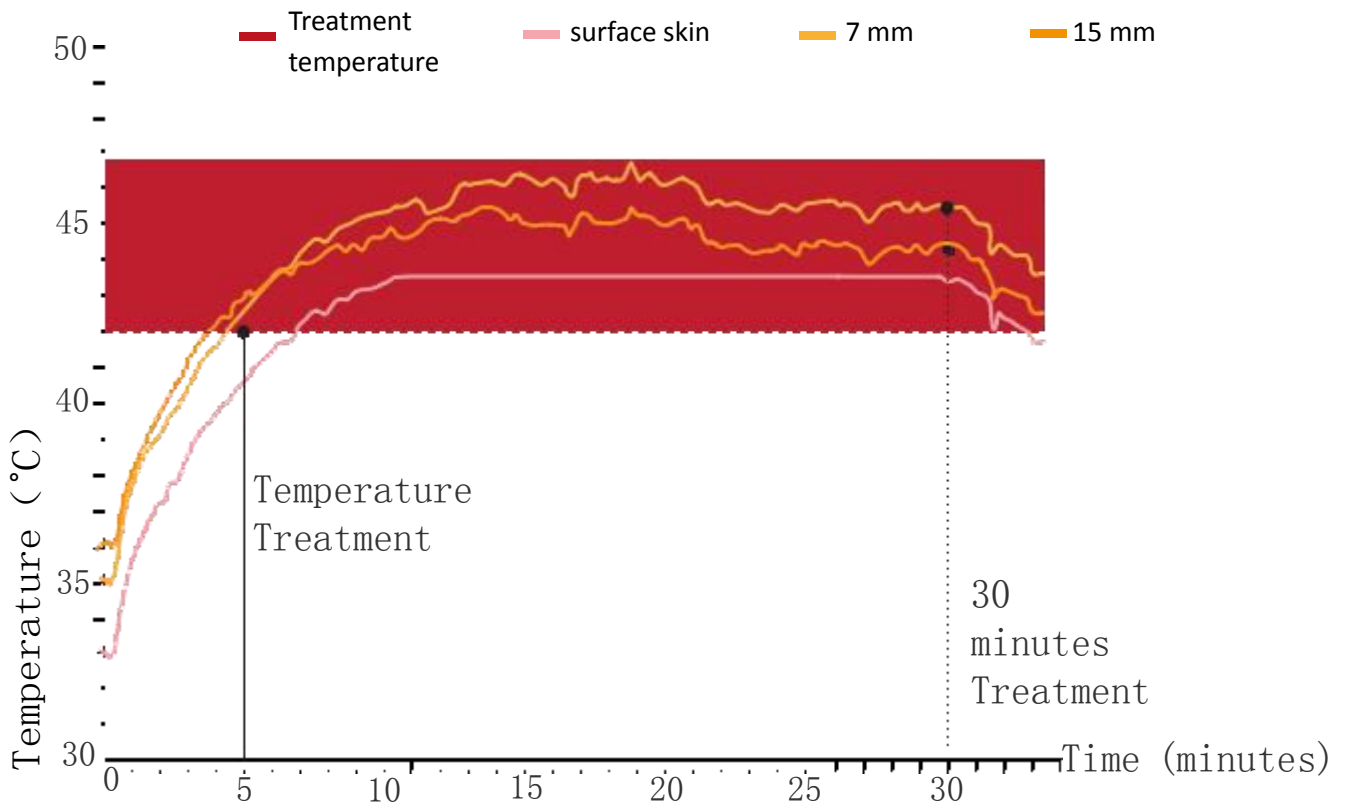
(Picture 2)



Picture 1: Metabolic activity in subcutaneous tissue.

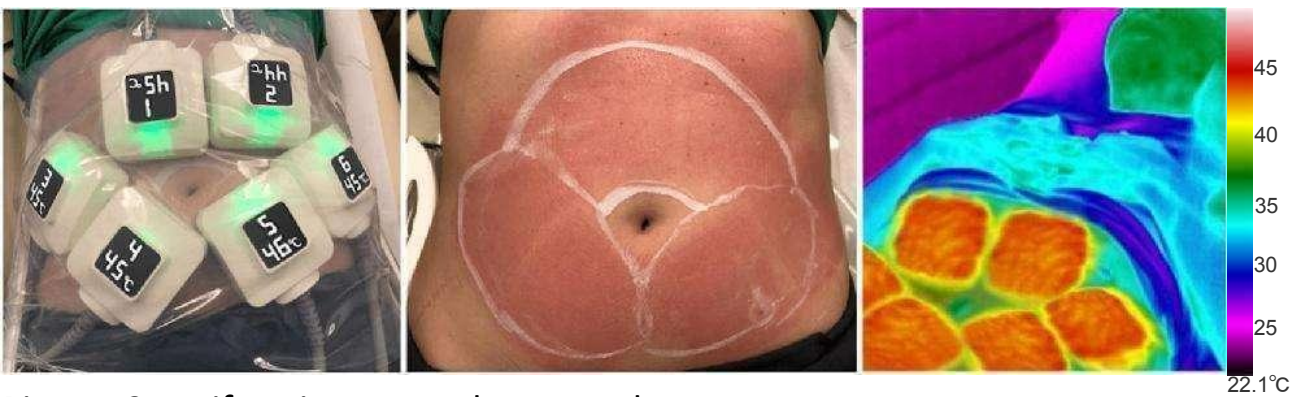
Before treatment (A), 4 weeks after treatment (B), and 10-12 weeks after treatment (C).

·(Picture 2) The temperature of the target area is set before treatment, and the real-time temperature-controlled radio frequency (RF) system maintains the tissue heat for a specific time, so that the energy is concentrated on the adipose tissue, and the fat cells are continuously heated to make their apoptosis, phagocytosis, and lymphatic metabolism. out of the body. A proprietary closed-loop temperature feedback mechanism ensures that treatment temperatures are met, guest comfort is maintained, and each 30-minute treatment session achieves clinical efficacy.



Picture2. Jisu ID Fat Dissolving Machine achieves thermal inversion - the temperature inside the skin is higher than the surface skin temperature.

•The unique handle design provides even heat to the area, eliminating potential hot spots and improving guest safety and comfort. (Picture3)



Picture 3. Uniformity across the treated area.

3. Research result

- Mono-polar radio-frequency therapy with a target temperature higher than 44°C.
- The treatment time for each flank was 30 minutes, and the treatment time for the abdomen was 30 minutes.
- Photographs and ultrasound evaluation showed positive improvement after one month of treatment.
- The treatment was well tolerated by the guests and there was no recovery period or prolonged discomfort after the treatment.



Before Treatment 12 weeks after 1 treatment



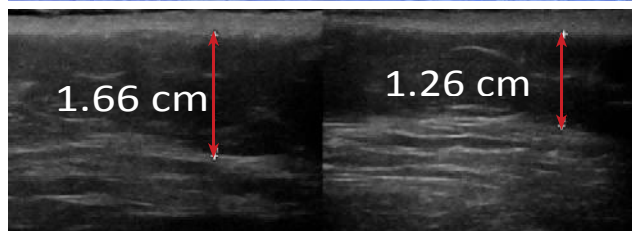
Before Treatment 12 weeks after 1 treatment



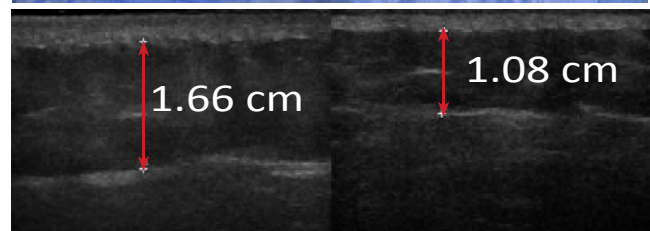
Before Treatment 12 weeks after 1 treatment



Before Treatment 12 weeks after 1 treatment



·Ultrasound showed fat loss of 4mm or 24%.



·Ultrasound showed fat loss of 5.8 mm or 35%.

Uniquely Designed Handle

No. 1, No. 2, No. 3, No. 4, No. 5, No. 6 handle: used for flat fixation therapy, it can be easily used without an operator, up to six 40cm², the handle can be fixed and placed on the body at the same time. localized fat pockets. 6 treatment areas covering the abdomen and flank up to 300 cm². Apply to the entire body area. 1 point(40cm²) treatment time: 15 minutes.



Flat fixation therapy: 6 body shaping handles 40cm²/2MHz

No. 7 handle, No. 8 handle: This handle is a hand-held, flat-on spot treatment for point treatment of fatty deposits smaller than the template area. The handle covers a small area of 16 cm² for treatment in 5 minutes. It is suitable for double chin, chubby flesh at the corners of the mouth, anterior breasts, and fat accumulation at the knees. 1 point treatment time: 5 minutes.



Handle flat point therapy: 2 double chin handles 16cm²/1MHz

No. 9 handle: For sliding therapy over medium or large target areas. Larger area than traditional mobile radio frequency, large-scale body sculpting, suitable for waist, abdomen, arm, back, inner/outer thigh, buttocks/hip/lower edge.

Treatment time: 25-60 minutes.



Hand-held sliding therapy: 1 body shaping handle 40cm²/2MHz

No.10 handle: For sliding treatment on the face, apply to the face. Treatment time: 15-30 minutes.



Hand Sliding Therapy: 1 Facial Handle

Clinical Case



Before Treatment

After Treatment

Before Treatment

After Treatment



Before Treatment

After Treatment

Before Treatment

After Treatment



Before Treatment

After Treatment

Before Treatment

After Treatment



Before Treatment

After Treatment

Before Treatment

After Treatment



Before Treatment

After Treatment

Before Treatment

After Treatment



Before Treatment

After Treatment

After Treatment

Technical Parameter

Product Name	Jisu ID Fat Dissolving Machine
Technology	Mono-polar radio frequency(RF)
Frequency	1MHz/2MHz
Input Voltage	AC110V/220V
Output Power	10-300W
Fuse	5A
Air Box Size	65×40×65cm
Gross Weight	About 26kg

Packing List

Accessory Name	Quantity / Unit
Host(Qualified Product)	1 set
Power Cable	1 piece
Operating handle	10 handles
Soft Rubber Fixing Pad	1 piece
Negative plate + Connecting wire	2 Negative Pieces + 2 Connecting Wires
Hanger	2 pieces

Device Indication

1.Installation: Insert and place the 10 handles in alignment with the sockets at the rear of the device, and connect the 2 negative pieces into the sockets at the rear of the device;

2.Insert the power cord into the rear socket of the device, turn on the power and turn on the power switch, and then press the power button to turn on the device.



3. Notes on handle installation and plugging:



① Steps for installing the handle: first correspond to the groove, and then insert the handle straight after aligning with the groove. When you hear a "click", click it and insert it in place.

② It is forbidden to shake left and right and rotate the plug handle!



③ Steps of pulling out the handle: first gently pull the collar with your hand, and pull out the handle in a straight line.

4. Negative plate indication: No. 7, No. 8, No. 9, No. 10 handles are operated with a negative plate respectively.



① If the negative electrode is a little dirty or cannot fit the skin completely, it needs to be replaced with a new one in time.


② During the treatment period, when the customer reports discomfort or heat in the contact area of the negative electrode, stop the operation first, and confirm whether the negative electrode is in full contact with the skin, and is correctly pasted on the skin, without creases or air bubbles. If there are grease,

danger and other attachments on the client's skin, it may cause the electrode pad to not be in close contact with the skin, so be sure to clean the skin before treatment to ensure that the negative electrode pad area is dry.

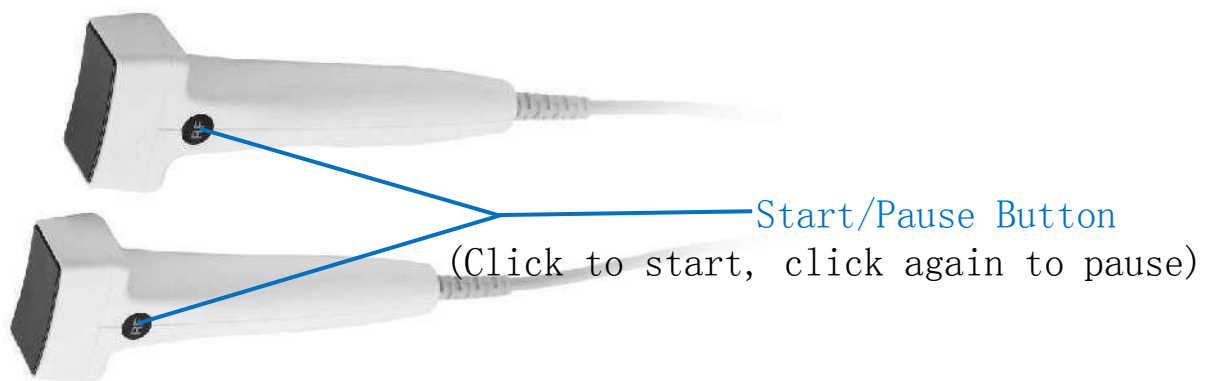
- ③ The correct way to use the negative plate: when lying down, stick it on your back and press it.
- ④ If the energy adjustment is relatively large when operating handle 9, it is recommended to use 2 negative electrodes if the negative electrode is a little hot.


5.1-6 handle indication:



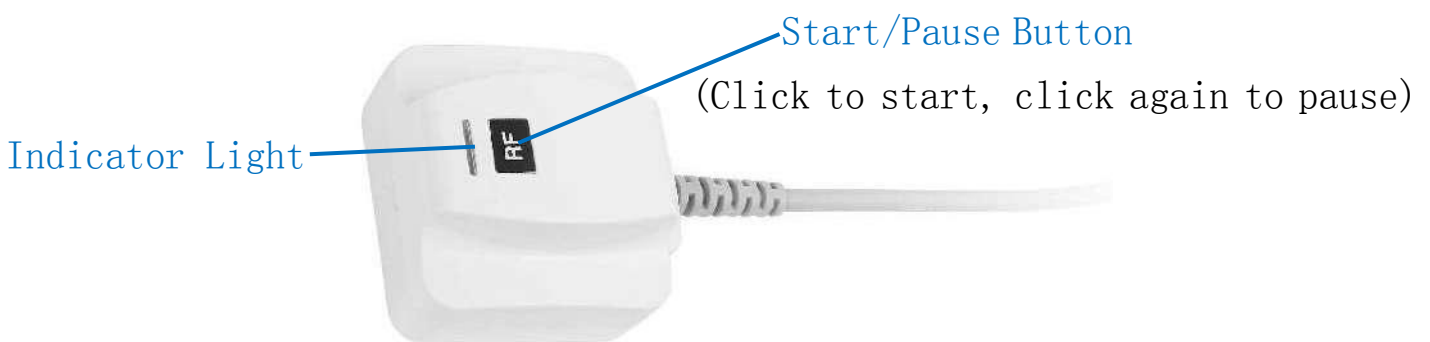
- Select the handle in the system working interface (Figure 3), click “” Start to work.



6.No.7-No.8 handle indication:



- This “**RF**” When the button light is flashing blue, it means standby or pause
- Press the start button, this “**RF**” When the button light is always on in blue, it means it is working;
- Select the handle in the system working interface (Figure 4), click “” after startup, need to press the handle “**RF**” button to start working.

7.No.9 handle indication:




- This “” when the indicator light is flashing blue, it means standby or pause;
- click it once “**RF**” press the start button, and the indicator light is always on in blue, indicating that it is working;
- Select the No. 9 handle in the system work interface (Figure 5), click “” after


startup, need to press the handle“**RF**”button to start working.

8.No.10 handle indication:



- Select the No. 10 handle in the system working interface (Figure 5), click“”Start to work.

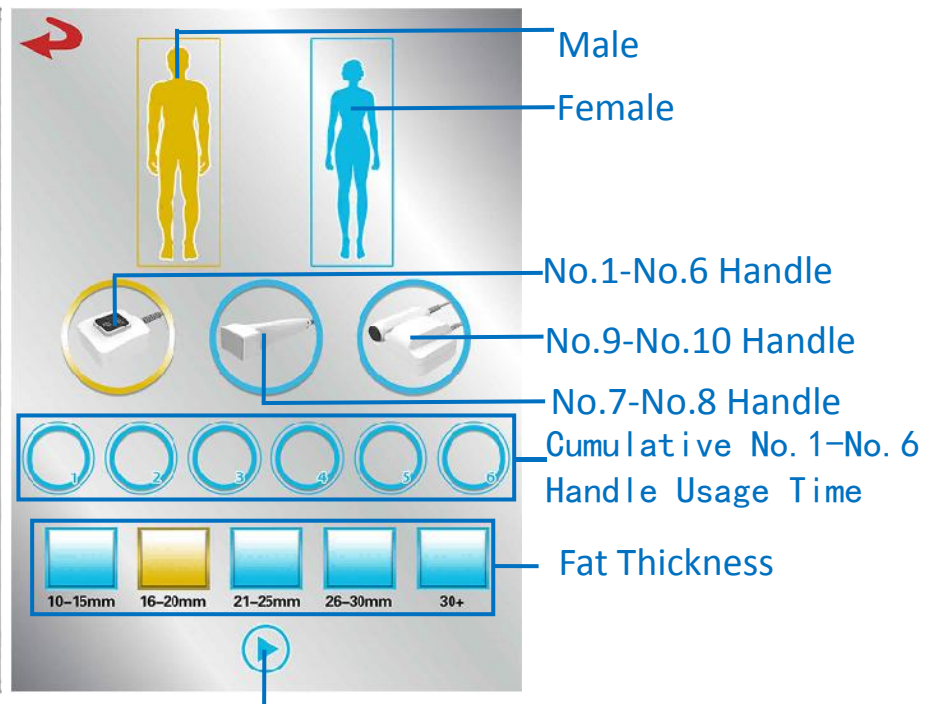
Interface Introduction

1. After booting up, the boot interface (Figure 1) will appear, click Figure 1 at random to enter the interface Figure 2.
2. In Figure 2, select the handle icon that needs to work, and select the setting (male or female, fat thickness) user information,click  to enter the working interface.


Interface Figure 1



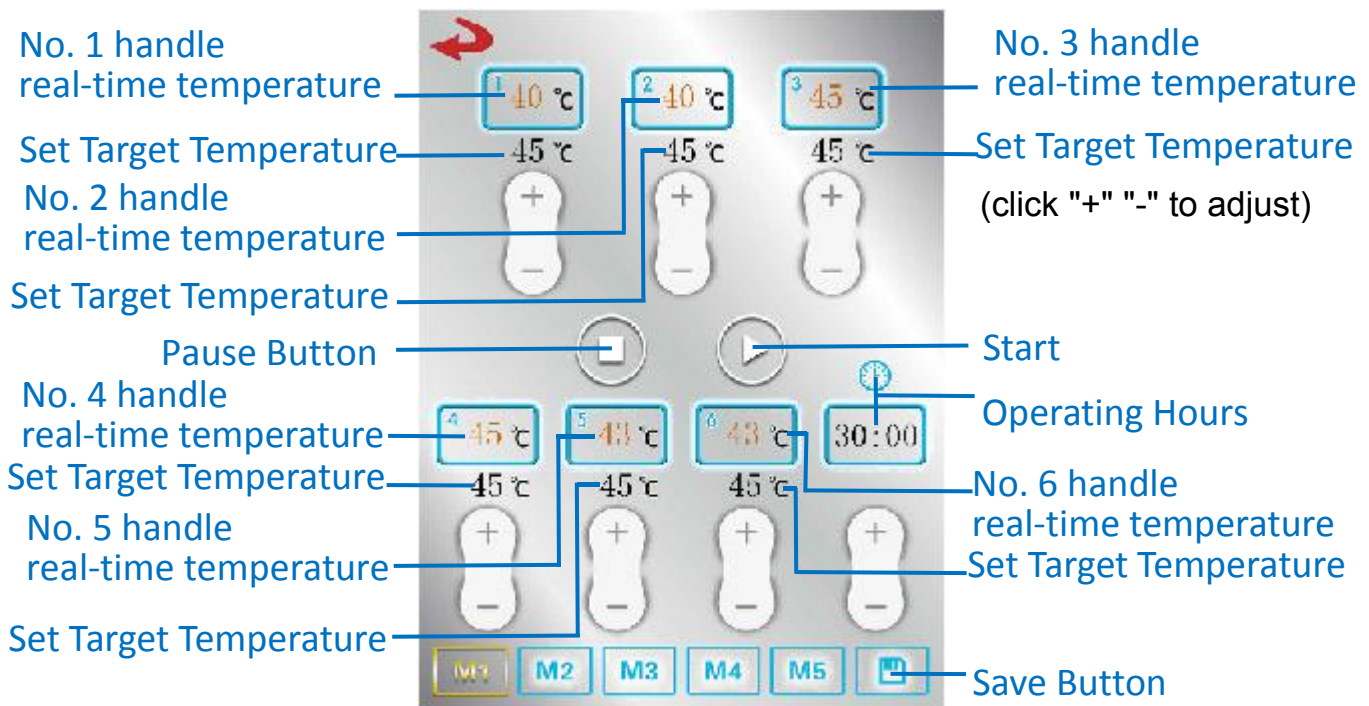
Interface Figure 2



Click to enter the working interface

3. Select the handle icon No. 1-6 in Figure 2, and then click  to enter the working interface (Figure 3).



Interface Figure 3


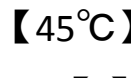








The buttons on the working interface (Figure 3) are introduced as follows:

- Choose [1, 2, 3, 4, 5, 6]: means No. 1, No. 2, No. 3, No. 4, No. 5, No. 6 handles; click the blue box to turn yellow, it means that this handle is selected to work, and up to 6 handles can be selected to work at the same time, and the parameters of each handle are independently adjusted.

Such as click  Blue turns Yellow  Indicates that the No. 1 handle is selected to work;

If you don't need the handle to work, please click  Yellow turns blue  .

- Shown in the box  Yellow numbers indicate real-time temperature.
- Below the box Black numbers  indicates the set target temperature, range 37-48°C, click  increase,  decrease to adjust.
-  Operating hours, click  increase,  decrease;  Show working hour.

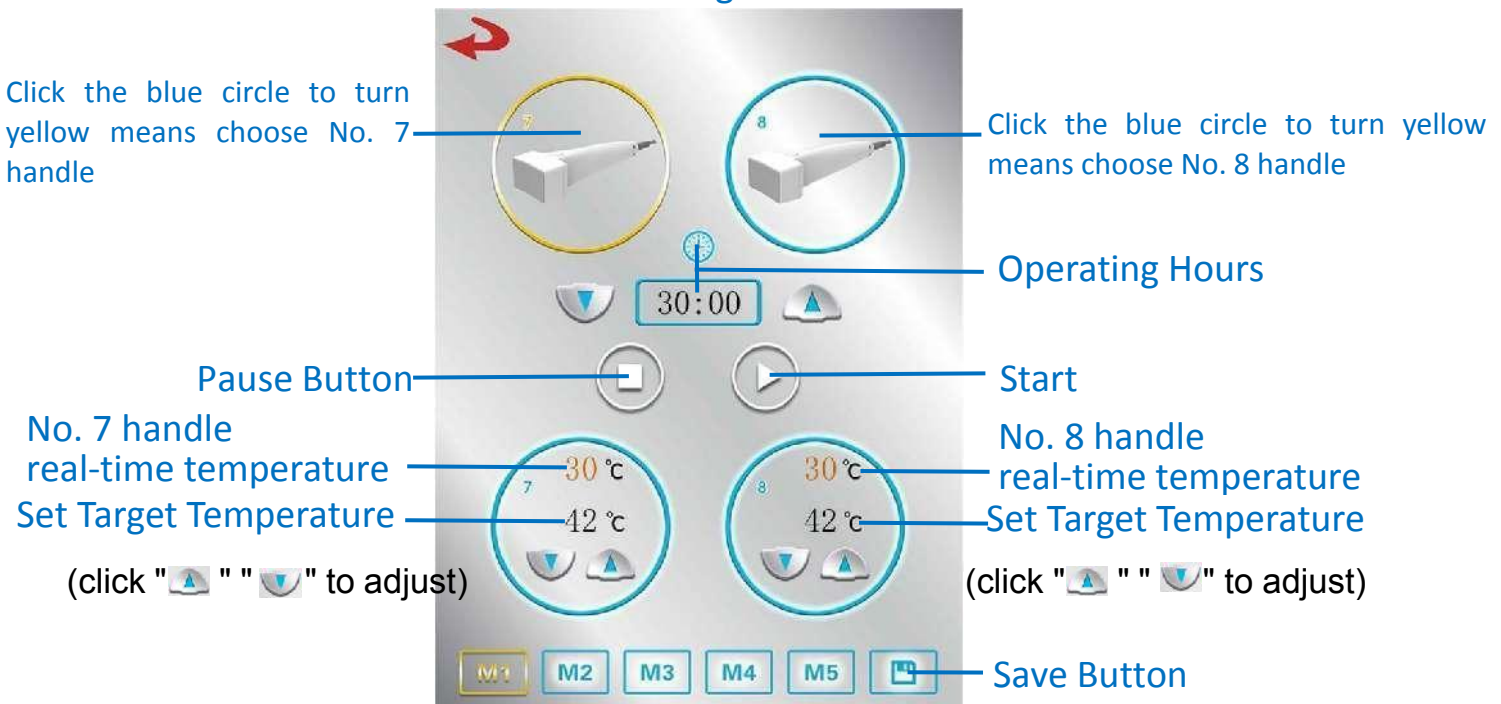
- Click button turn to indicates that the device starts to work;click indicates pause,the device is in standby state.

- **【M1】** to **【M5】** indicates the choice of 5 parameter storage modes or recalled parameters,click

Save parameter storage.Click indicates to return to the previous interface.

4.Select the handle icon No. 7-8 in Figure 2,then click so can enter the working interface (Figure 4).





Interface Figure 4




The buttons on the working interface (Figure 4) are introduced as follows:• Choose [7, 8]: means No. 7 and No. 8 handles; click the blue circle to turn yellow to indicate that this handle is selected for work, and at most 2 handles can be selected to work at the same time, each handle parameters are independently adjustable. Click the yellow circle to turn blue if you don't need the handle to work.

- Shown in the circle **【30°C】** Yellow numbers indicate real-time temperature.
- Black numbers in circles **【42°C】** Indicates the set target temperature, range 37-48°C, click increase, decrease to adjust.
- operating hours,click increase, decrease; **【30:00】**

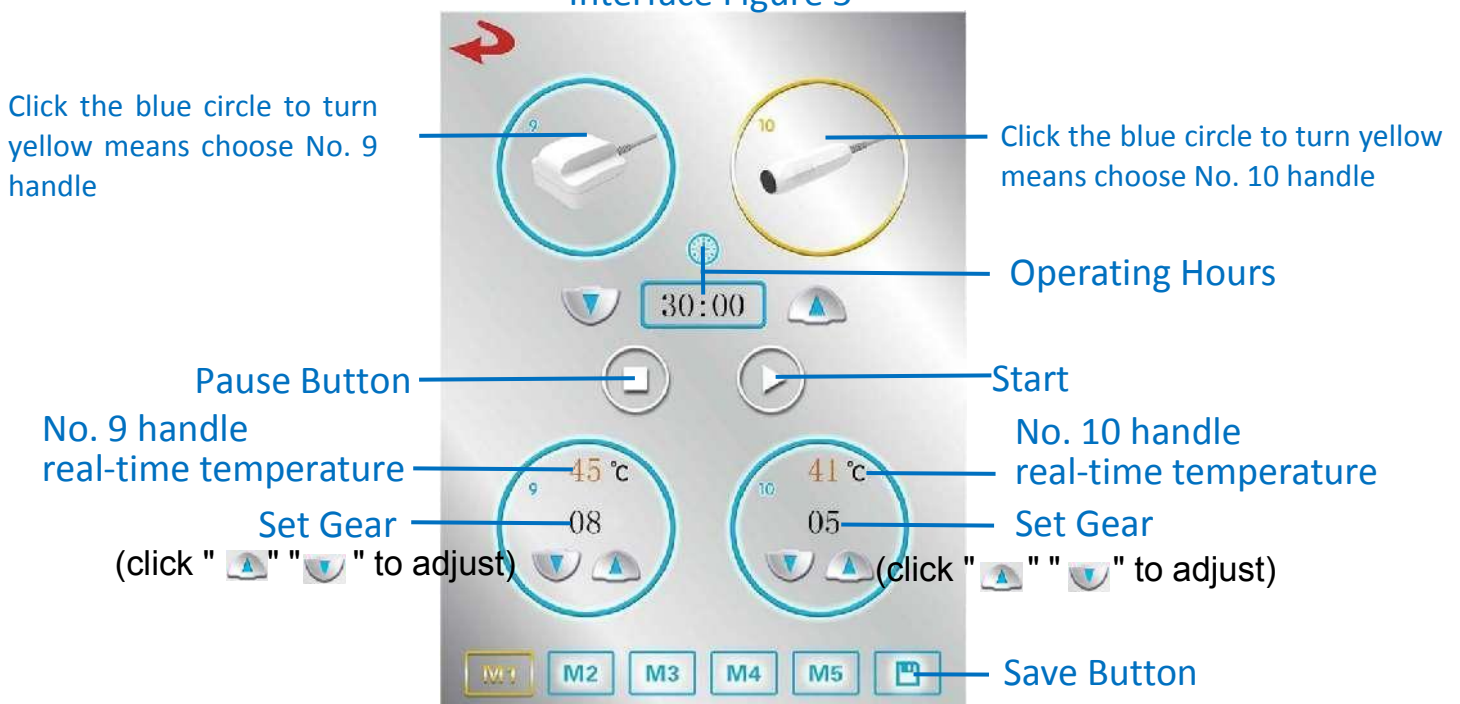
Show working hours.

- Click  button turn to  Indicates that the device starts to work;click  indicates pause, the device is in standby state.
- **【M1】** to **【M5】** indicates the choice of 5 parameter storage modes or recalled parameters,click 



Save parameter storage.Click  indicates to return to the previous interface.

5.Select the handle icon No. 9-10 in Figure 2,then click  so can enter the working interface (Figure 5).

Interface Figure 5







The buttons on the working interface (Figure 5) are introduced as follows:


- Choose [9, 10] means No. 9 and No. 10 handles; click the blue circle to turn yellow to indicate that this handle is selected for work, and at most 2 handles can be selected to work at the same time, each handle parameters are independently adjustable. Click the yellow circle to turn blue if you don't need the handle to work.
- Shown in the circle **【45°C】** Yellow numbers indicate real-time temperature. • Black numbers in circles **【08】** Indicates the energy gear, the energy range is 1-10 gears,The higher the gear, the faster the energy rises.Click  increase, 


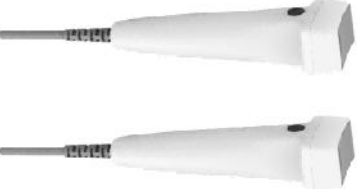
decrease to adjust.



-  Operating hours, click  increase,  decrease;  Show working hours.

- Click  button turn to  indicates that the device starts to work; click  Indicates pause, the device is in standby state.

- **【M1】** to **【M5】** indicates the choice of 5 parameter storage modes or recalled parameters,click 

Save parameter storage.Click  indicates to return to the previous interface.

Treatment Handle	Setting parameters	Usage time	Interval time/course of treatment
 <p>No. 1, No. 2, No. 3, No. 4, No. 5, No. 6 handle</p>	<p>43-46°C</p>	<p>Each point (40cm²) imprint/30-40 mins</p>	<p>Interval time: 2-4 weeks course of treatment: 3-5 times</p>
 <p>No. 7, No. 8 handle</p>	<p>42-45°C</p>	<p>Each point (16cm²) imprint/5 mins</p>	<p>Interval time: 2-4 weeks course of treatment: 3-5 times</p>

 <p>No. 9 handle</p>	<p>5-8 gear</p>	<p>(legs/arms): 25-30 mins (abdomen, waist): 30-60 mins</p>	<p>Interval time: 2-4 weeks course of treatment: 3-5 times</p>
 <p>No. 10 handle</p>	<p>5-8gear</p>	<p>15-30 minutes</p>	<p>Interval time: 2-3 days course of treatment: 10 times</p>

Reference parameters:

- The recommended parameters are provided as guidelines and based on practitioner feedback. The goal is for patients to be treated at the highest temperature they can comfortably tolerate.
- It is better to adjust the energy from low to high to the range that the guests can bear. (If the guest can still bear it, it can be increased accordingly, as long as the guest feels a strong warm and comfortable without burning sensation).

Pre-treatment guidelines

1. Remove makeup and clean skin for guests, keep it clean and dry before treatment.
2. If there is too much hair in the treatment area, it needs to be removed.
3. Inform the guests that they need to remove the metal accessories they are wearing.
4. Before the treatment starts, draw a line to mark the boundary of the

treatment area to ensure the correct position of the mobile phone.

5. Photos can be taken before the operation for comparison after treatment.
6. Communicate and explain in advance how customers will feel during the operation of the equipment:
7. Inform the client that when the treatment starts, the client feels a mild warm feeling. As the real-time temperature rises, this thermal feeling is strengthened until the set target temperature is reached, and the constant temperature is maintained, and the constant temperature experience is more comfortable.
8. Inform the guests of the normal reactions that may occur in the care: During the use process, the blood flow will be driven due to reasons such as warmth, which will cause the skin to become red, which is a normal phenomenon.
9. Groomers must wear gloves when touching guests' skin to ensure they do not provide parallel current return paths.

Precautions

1. Avoid the belly button;
2. The Adam's apple area needs to be avoided; special care should be taken with the double chin to ensure that the lower edge of the handle does not touch the thyroid cartilage or the neck skin on the trachea, as this may cause skin damage. Treatment of thyroid cartilage or trachea is contraindicated.
3. Do not treat areas that do not ensure full surface contact.
4. Ensure that there is at least 1cm of soft tissue in the treatment area.

5. Do not work with hard structures, including bone or cartilage.

6. Ensure that the skin of the treatment area is dry before operation, and at the same time ensure that the energy output area of the handle is dry. This can lead to adverse events if the skin and handle of the treatment area are wet prior to imprinting.

Usage Instructions

1.No.1, No.2, No.3, No.4, No.5, No.6 handle operation steps:

(1) After cleaning the skin, draw a line to mark the treatment area;


(2) Enter the system, select the desired handle in the interface picture 3 (click the blue box of the handle to turn into a yellow box, it means that the handle is selected for work);

Remarks: In the interface picture 3, 6 handles can adjust different parameters independently, and can work independently or at the same time; up to 6 handles can be used, which can be placed in a single position or placed in multiple areas at the same time.

(3) Set the target temperature parameters and use time (working time): set the temperature reference to 43°C-46°C;

The recommended use time for each point (40cm²) is 30-40 minutes.

(4) After setting the parameters, ensure that the skin of the treatment area is dry before operation, and at the same time ensure that the energy output area of the handle is dry, and then apply directly to the skin, the handle is flat against the skin, and the fixed handle is wrapped with a soft rubber fixing pad to ensure that each handle is in full contact. Stick to the skin;

click "" on your system to start and get to work.

(5) During the operation, it must be fully close to the skin, and the handle cannot be tilted or there is a gap in the handle;

(6) In operation--energy adjustment: It is recommended to adjust the temperature from low to high, and increase the temperature by 1°C each time. During operation, ask the customer about the feeling of nursing. It feels strong and comfortable without burning. (subject to the actual tolerance of the guests). If there is an unpleasant feeling of excessive warmth that the guest cannot bear, lower the target temperature by 1°C until the patient can tolerate the treatment.

(7) After the operation, turn off the device, wipe the handle with a soft cloth, and place it back on the hanger.

2.No. 7, No. 8 handle operation steps:

(1) After cleaning the skin; mark the treatment area with a handle-sized square;



(2) Stick the negative electrode sheet at least 10 inches away from the treatment area to ensure that the negative electrode sheet is completely close to the skin;

(3) Enter the system, select the desired handle in the interface picture 4 (click the blue box of the handle to turn into a yellow box, it means that the handle is selected for work);

Remarks: In the interface picture 4, 2 handles can adjust different parameters independently, and can work independently or at the same time; at most 2 handles can be used.

- (4) Set the target temperature parameters and use time (working time): set the temperature reference to 42°C-45°C;

It is recommended to use 5 minutes for each point (16cm²) imprint.

- (5) After setting the parameters, click "  " to start the system. Before operation, ensure that the skin of the treatment area is dry, and at the same time, ensure that the energy output area of the handle is dry, and then apply it directly to the skin, making sure that the handle is completely in contact with the skin, and then press the handle again. "  " start button.

- (6) The beautician holds the handle and places the handle horizontally on the skin for 5 minutes. The area of each stamp is overlapped by 10-20%, and there will be 3-5 marks on the entire lower jaw (according to the size of the treatment area of the client) , there are usually 4-6 marks on the face.

NOTE: Make sure the skin and handle energy output area is dry before each stamping.

- (7) During the operation, it must be close to the skin, and the handle must not be tilted or there is a gap;

Note: When manipulating the jaw, make sure to remain still (not talking or chewing) during the treatment.

- (8) During operation - energy adjustment: It is recommended to adjust the temperature from low to high, and increase the temperature by 1°C each time. During the operation, ask the customer about the nursing feeling at the right time. It feels strong and comfortable without burning. (subject to the actual tolerance of the guests). If there is an unpleasant feeling of excessive warmth

that the guest cannot bear, lower the target temperature by 1°C until the patient can tolerate the treatment.

(9) After the operation, pause the device and gently remove the negative electrode.

(10) After the operation, turn off the device, wipe the handle with a soft cloth, and place it back on the hanger.

3.No.9 handle operation steps:

(1) After cleaning the skin; draw a line to mark the treatment area;

(2) Stick the negative electrode sheet at least 10 inches away from the treatment area to ensure that the negative electrode sheet is completely close to the skin;

Remarks: If the energy adjustment is relatively large, it is recommended to use 2 negative electrodes if the negative electrode is a little hot.


(3) Take an appropriate amount of essence or essential oil product and apply it evenly to the operation site;

(It is recommended to use the product as a lubricating medium to assist the operation to better conduct heat energy to the deep layers)

(4) Enter the system, select the No. 9 handle in the interface picture 5 (click the blue box of the handle to turn into a yellow box, it means that the handle is selected to work);

(5) Set energy gear parameters and use time (working time): set energy gear reference to 5-8 gears;


Use for about 25-60 minutes depending on the specific treatment area.(6)

After setting the parameters, click "" to start the system, and then press the "**RF**" start button on the handle.

- (7) The beautician holds the handle and slides slowly against the surface of the skin. The handle continues to slide up, down, left, and right against the skin. Do not stay in the same position for more than 3 seconds;
- (8) During the operation, it must be close to the skin, and the handle should not be tilted or there is a gap.
- (9) During the operation, the product is easily absorbed by the skin, please pay attention to supplement.
- (10) In operation--Energy debugging: It is recommended to adjust the temperature from low to high, and slowly increase it by 1 gear each time. During the operation, ask the customer about the feeling of nursing. It feels strong and comfortable without burning. (subject to the actual tolerance of the guests). For customers with mature skin, in warm and comfortable conditions, as far as possible to the 8th gear for the best energy. During the upward adjustment process, ask the guests about their feelings. If there is an unpleasant feeling of excessive warmth, lower it by 1 gear until the patient can tolerate the treatment.
- (11) After the operation is over, pause the device and gently remove the negative electrode.
- (12) After the operation, turn off the device, wipe the handle with a soft cloth, and place it back on the hanger.

4.No.10 handle operation steps:

- (1) clean skin;

- (2) Stick the negative electrode sheet at least 10 inches away from the treatment area; ensure that the negative electrode sheet is completely and tightly attached to the skin;
- (3) Take an appropriate amount of essence or essential oil product and apply it evenly to the operation site;
(It is recommended to use the product as a lubricating medium to assist the operation to better conduct heat energy to the deep layers)
- (4) Enter the system, select the No. 10 handle in the interface picture 5 (click the blue box of the handle to turn into a yellow box, it means that the handle is selected to work);
- (5) Set energy gear parameters and use time (working time): set energy gear reference to 5-8 gears;
Recommended use time is about 15-30 minutes.
- (6) After setting the parameters, click "  " to start the system to start working;
- (7) The beautician should hold the handle close to the facial skin and slide it in a circular motion at a constant speed, or operate from bottom to top, and do not stay in the same position for more than 3 seconds;
- (8) During the operation, it must be close to the skin, and the handle must not be tilted or there is a gap.
- (9) During the operation, the product is easily absorbed by the skin, please pay attention to supplement.
- (10) In operation--Energy debugging: It is recommended to adjust the temperature from low to high, and slowly increase it by 1 gear each time. During the operation, ask the customer about the feeling of nursing. It feels

strong and comfortable without burning. (subject to the actual tolerance of the guests). For customers with mature skin, in warm and comfortable conditions, as far as possible to the 8th gear for the best energy. During the upward adjustment process, ask the guests about their feelings. If there is an unpleasant feeling of excessive warmth, lower it by 1 gear until the patient can tolerate the treatment.

(11) After the operation is over, pause the device and gently remove the negative electrode.

(12) After the operation, it is recommended to use a moisturizing mask for better effect, and pay attention to sun protection.

(13) After the operation, turn off the device, wipe the handle with a soft cloth, and place it back on the hanger.

Post-Treatment Guidelines

1. Redness and swelling may occur in the treated area, which usually subsides after a few hours.

2. Some sensitive guests may experience swelling and slight pain, which usually subsides in two to three days. Normal skin care and make-up can be performed after the procedure.

3, normal diet, light is better, do not overeating.

4. Do not wash your face with hot water (water that does not exceed body temperature) within 3 days.

5. Increase water intake 24 hours after treatment to help metabolize fat.

6. After treatment, you can resume normal activities, including fitness programs, immediately.

7. Fat cell destruction occurs slowly over the next 3 months. During this time, if you are able to avoid or minimize anti-inflammatory drugs such as ibuprofen.

Common Question

What is a Jisu ID Fat Dissolving Machine?

It is an innovative skin tightening and body sculpting device. Its working principle is to use radio frequency energy for deep controllable heating, which is painlessly transmitted through the epidermis down to the fat layer and dermis through various handles. This radio frequency energy is converted into heat and destroys fat cells, which are then cleared by the body's lymphatic system. In addition to reducing fat, RF energy can also stimulate collagen regeneration, elastic fibers naturally produce immediate contraction and tightening, and repair connective tissue, so as to achieve fat-dissolving body sculpting, facial tightening and lifting, improvement of wrinkles, and elimination of double chin.

Is the Jisu ID Fat Dissolving Machine safe?

It has an intelligent temperature control and real-time temperature monitoring system, which provides precisely controlled radio frequency (RF) energy to the target treatment area through the handle, and the system monitors the skin temperature in real time to ensure safety and effectiveness. A non-invasive and comfortable treatment that is safe and non-invasive, has no side effects, and has no downtime.

What body parts can the Jisu ID Fat Dissolving Machine do?

The Jisu ID Fat Dissolving Machine has several handle options of different sizes, and the treatment depth is also different for different frequencies. It can be very customized for skin tightening and shaping for the dermis and different fat areas, from below the face to the body above the knees. are all areas that can be covered.

How many handle probes are needed for the abdomen?

Depending on the size of the area, 4-6 handle probes are required, each with a surface area of 40cm², up to 6 can cover the abdominal and lumbar area up to 300cm² of treatment area. No. 1, No. 2, No. 3, No. 4, No. 5, No. 6 handle probes can independently adjust different parameters, and all 6 can work independently or at the same time.

How many times do you need to do it? How long is the interval between treatments?

Depending on the thickness of the local fat, it is recommended to do a course of treatment (3-5 times). Do it every 2-4 weeks.

How long will it take to finish?

The operation can make the adipocytes inactive and apoptosis. The destroyed adipocytes begin to metabolize and excrete from the body after 4-6 weeks, and the best results appear after about 8 to 12 weeks of treatment.

Will it hurt to do a Jisu ID Fat Dissolving Machine? How does it feel?

Painless and feels similar to a heating pad or hot stone massage. The temperature can be adjusted according to your comfort level throughout the treatment. Although the heat in the adipose tissue keeps increasing during the treatment, with its new intelligent temperature control and real-time monitoring system, the skin surface temperature is constantly monitored and displayed dynamically in real time, which makes the customers feel comfortable during the treatment, and most of the customers are Acceptable, some customers are even comfortable enough to fall asleep.

Are there any side effects?

There are few side effects associated with this non-invasive treatment. RF energy is not ablative and therefore does not damage the skin. Some patients may experience mild redness, sweating, mild tenderness, or swelling in the treated area for the first few hours after treatment, similar to what you might experience after a hot stone massage, usually these side effects are It disappears within a few hours and does not affect normal life.

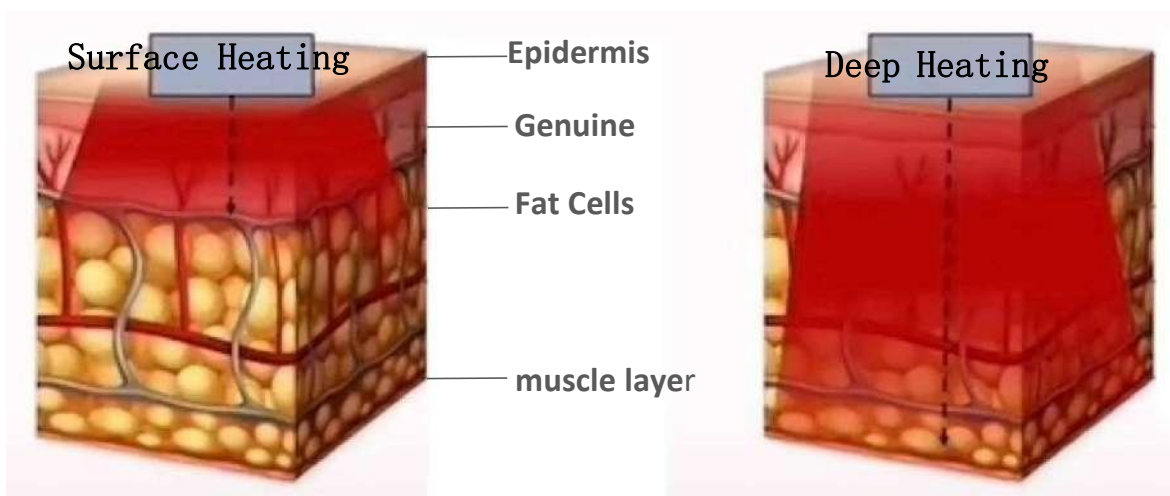
Is it easy to rebound after treatment?

No, because it uses the principle of monopolar radiofrequency lipolysis. The energy delivered permanently destroys subcutaneous fat cells, causing irreversible cell death, reducing the number of fat cells in the treated area and improving local contours. The number of fat cells in adulthood is fixed and will not increase, so eliminating destroyed fat cells from the body will not rebound.

Therefore, if you can achieve a reasonable diet, choose a healthy lifestyle, and avoid overeating and weight gain, the effect of the treatment part can be maintained.

What is the difference between the monopolar radio frequency and the multipolar radio frequency of the Jisu ID Fat Dissolving Machine?

The monopolar radio frequency of the lipolysis machine has a deeper penetration depth, so the effect of fat reduction and shaping is better. The lipolysis machine can reduce the number of fat cells, and the multipolar radio frequency can only reduce the volume of fat cells.



Common RF in the market Multi-pole, single-pole 6.78MHz surface heating

Body Sculpting ID fat dissolving instrument

What is the difference between the Jisu ID Fat Dissolving and other body sculpting treatments on the market?

- Faster -- Treats a body part in as little as 30 minutes.
- Safer -- no extended recovery time required.

- COMFORT--It feels like a hot stone massage.
- Fat Loss -- Clinical studies show an average fat loss of 24-27%.
- Versatile--Best of all, the Sculpture ID can treat a wide variety of patients who may not be suitable for other procedures, as well as many body parts, skin types and fat densities.

Who can't receive Jisu ID Fat Dissolving Machine treatment?

The following symptoms should be used with caution when using this instrument, the details are as follows:

- pregnant women
- Avoid use on the abdomen during women's menstrual period
- The treatment range is inflammation, purulent acne, acne flakes and more severe cases should not be treated
- Treatment of open or infected wounds/skin diseases: such as eczema, dermatitis, rash, psoriasis, etc. should not be treated
- People with known heat sensitivity, such as thermal urticaria, should not be treated
- If fillers such as hyaluronic acid and botulinum toxin have been injected within the treatment range within six months, it is not suitable for treatment
- Use with caution in high blood pressure, heart disease, diabetes, epilepsy, hyperthyroidism, cancer, and tumors;
- Use with caution in patients with bleeding disorders or concomitant use of blood thinners;

- Cardiovascular diseases: use with caution in patients with thrombophlebitis, arteriosclerosis, etc.;
- Use with caution in patients with implanted cardiac pacemakers, defibrillators and other electronic devices;
- Use with caution in those with metal implants (gold wire implants or those with nails, screws, metal joints, etc.).