

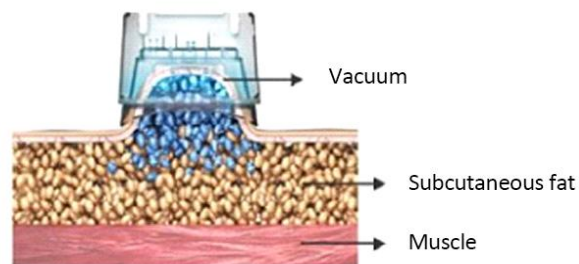
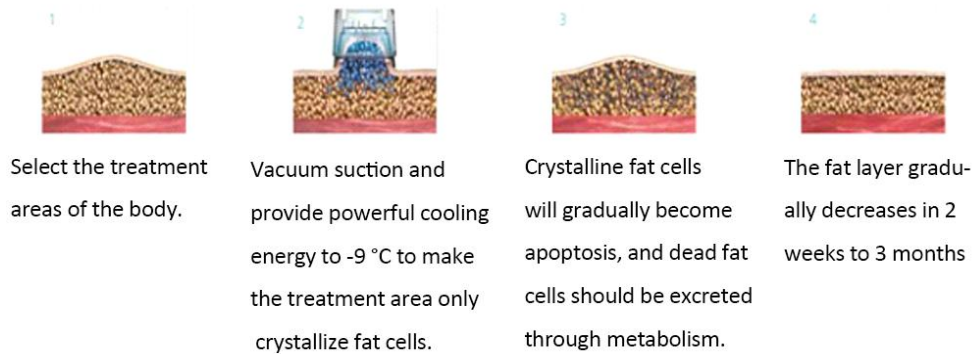
USER MANUAL



Theory

Frozen fat Decomposition is a new technology that reduces fat cells by non-invasive use of controlled cooling.

It delivers strong cooling power to the treatment area, to make fat cells crystallized and then achieve fat cell apoptosis. The treated fat cells die and then naturally fall off the body.



How is subcutaneous fat cell being destroyed?

1. Choose the treatment area.
2. Start the body shaping machine at treatment area, it will deliver cooling energy while inhaling the selected part.
3. Subcutaneous fat cells under cold air will gradually eliminated and excreted.
4. After treatment, the thickness of the subcutaneous fat layer will be reduced, helping to manage body size.

*By reducing the residual of the local fat layer after weight loss, the contour of the body part is effectively adjusted to prevent the balance of diet and exercise.

What is the cool shaping machine?

It is used for low-temperature body fat decomposition.

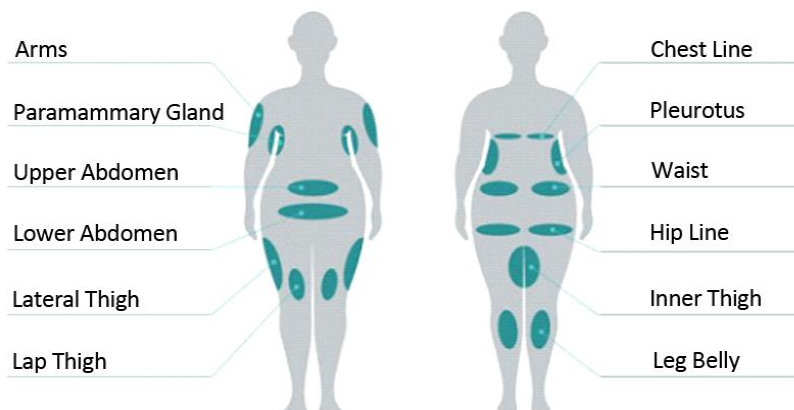
It is suitable for eliminating subcutaneous fat cells by controlling cooling energy delivered to the treatment area. It reduces the thickness of fat and make your body symmetrical.

Low Temperature
Decomposition

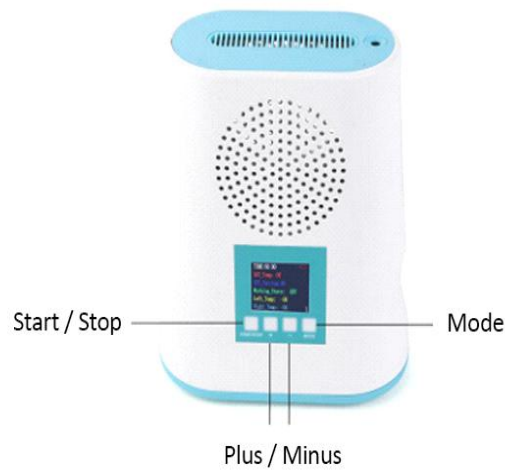


Suitable for Body Slimming

Treatment Areas:



Interface



TIME:60:00	Treatment Time
SET_Temp: 00	Cooling Temperature
SET_Vacuum:00	Vacuum
Working State: OFF	On/Off
Left_Temp: -00	Left Temperature
Right_Temp: -00	Right Temperature

Treatment Time:

The treatment time depends on the body part of the treatment and the skin condition of the individual.

Our recommendations for treatment time for various parts of the body are as follows:

A relatively wide body part (such as the abdomen, small belly, thighs, etc.) is for 40 to 60 minutes each time. Narrow body parts for 20 to 30 minutes.

Treatment Course:

It depends on the condition of the users and treatment area. We usually recommend the

following:

Wide parts (such as abdomen, small belly, thighs, etc.) recommended one time in 2, 3 weeks, total treatment 4 times.

The narrow body part is 20-30 days once, and additional treatment is prevented, the second treatment can be performed after 3 weeks of the first treatment.

When can the users have an effect?

The effect depends on the users and the treatment areas. After 2 or 3 weeks of treatment, the users will see the effect.

Do the users need other special treatments?

It is recommended to combine the following operations:

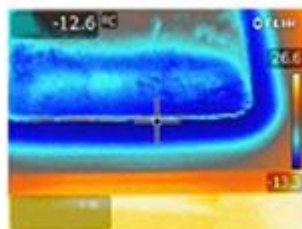
- High-intensity focused ultrasound therapy or massage, interval RF before the frozen weight loss treatment can make the treatment better.
- After the treatment, enough massage is needed to smooth the detoxification.
- Drinking enough boiled water also helps lymphatic drainage

Is the anti-freeze membrane useful?

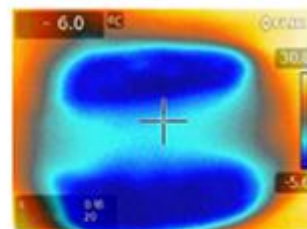
Yes. Because the antifreeze membrane protects the skin during treatment. In addition, the antifreeze membrane contains a formula that prevents frostbite, and during the treatment, the cooling power that directly stimulates the skin can be controlled.

Safety

Controlling cooling energy only affects fat cells and cryo-pad gels can effectively protect skin surfaces and other tissues








Freezing plate



Cooling energy treatment area during treatment

Spare Parts

				
Host	Anti-freeze Membrane	Shaped Silicone	Power Connector	Shoulder Strap

Spare Part for Treatment Areas



Thigh



Arms



Waist



Abdomen

Application Areas:



Arms

Abdomen, Waist

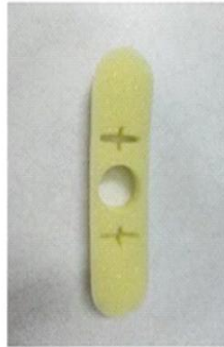
Thigh

Back

Installation

Check sensor cover and liquid filter cotton

Make sure the yellow filter cotton is installed inside the sensor cover



Yellow Filter Cotton



Sensor Cover



Host



Install the Yellow
Filter Cotton



Install the Sensor Cover

- **Install the Shaped Silicone**

Install the needed silicone on the machine to prevent leakage(Fig 1)

- **Insert anti-freeze membrane**

1. Take a piece of anti-freeze membrane and apply the essence of the membrane to the silicone.

Apply the remaining essence to the treatment area.

2. Take out the membrane, put it on the mouth of the machine, then snap it into the silicone and clamp it on both sides.

Do not remove the silicone from the membrane.

The centerline of the anti-freeze membrane is parallel to the silicone(Fig 2).



Fig 1



Fig 2

3. It is necessary to press the two sides of the anti-freeze membrane and stick it in the silicone (Fig. 3) to prevent the membrane from staining on the skin during the treatment.

4. Make sure that the anti-freeze membrane is in close contact with the freezer plate so that the membrane is attached to the red label of the freezer plate (Fig 4).



Fig 3



Fig 4

- Connection of the Shoulder Strap

Attach the shoulder strap to the silver circle on the back of the instrument(Fig 5, Fig 6).



Fig 5



Fig 6

Steps:

Select the treatment area > Equipped with silicone > Insert anti-freeze membrane > Adjust time/pressure/temperature > Start

Precautions

- If the anti-freeze membrane is not installed, snap the membrane into the silicone and clamp it on both sides before use.
- Please check if the yellow filter cotton is wet during preparation. If it is wet, please replace it. Generally, it needs to be changed after 3-5 times. It can be used again after being washed and dried.
- The anti-freeze membrane is disposable.
- After using the instrument, the instrument must be kept clean.
- Remove the anti-freeze membrane after treatment, and then set the instrument upright (if the anti-freeze membrane is not taken out of the instrument, the membrane essence will flow into the instrument, causing malfunction).
- It may cause erythema, scars or scarce bubbles after operation.
- Recommended operation time for one hour.
- Prohibition of erecting work as Fig 7.
- Turn on the machine to show that A1 means the anti-freeze membrane is not installed, A2 means the yellow filter cotton is wet, A3 A4 means the freezing plate is too hot(Fig 8).



Fig 7

A1

Fig 8

Before and After



Parameters:

Output voltage	DC12V/7A
Input voltage	100-240V
Output power	90W
Cooling temperature	-2 - 12
Vacuum pressure	Max. 45kpa
Treatment time	30-99min
Machine size	21*16*8 cm
Weight	1200G
Air box size	37*24*14 cm
Package size	40*30*18 cm, Gross weight 5KG

Advantages:

The Optimum Size

Its optimum size to enhance usability, performance and provide satisfaction. Also, its sleek design and white color is attractive.

Convenient Adjustment Function

It conveys cooling energy properly to subcutaneous fat cells by precise adjustment of temperature and pressure.

Three-dimensional Shaper

Precise Shaper covers multiple areas and adheres to selected parts without pressure loss.

Further Increase Skin Flexibility

It protects the skin from cooling energy, and has the effects of imparting elasticity, nutrition, moisture while improving the effectiveness of the product.

Is the treatment safe?

It's safe, because the controlled cooling power only affects fat cells and does not damage other cells and tissues.

Is there any pain or side effect?

The user will experience temporary pain or discomfort at the beginning of the treatment. However, due to the cooling power, the treatment area will immediately become numb and the pain and discomfort disappear. Stress may cause erythema, bruising or sparse bubbles to a few therapists.

Can the users return to normal activities after treatment?

Of course. After treatment, the users can perform normal daily activities immediately.

Where is the fat?

The cooled crystalline fat cells die and are naturally excreted by the body's metabolism as lymphatic drainage.

