

Liposonix Manual

Spare parts List:



Handpiece*1 pcs



1.3CM*1pcs



0.8CM*1pcs

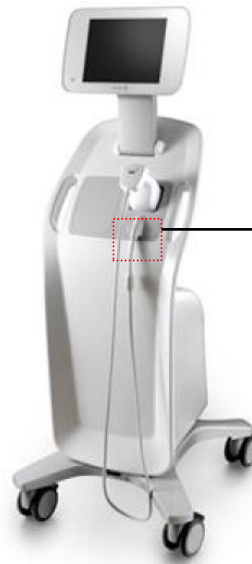


Power Line*1pcs

Install the treatment head:

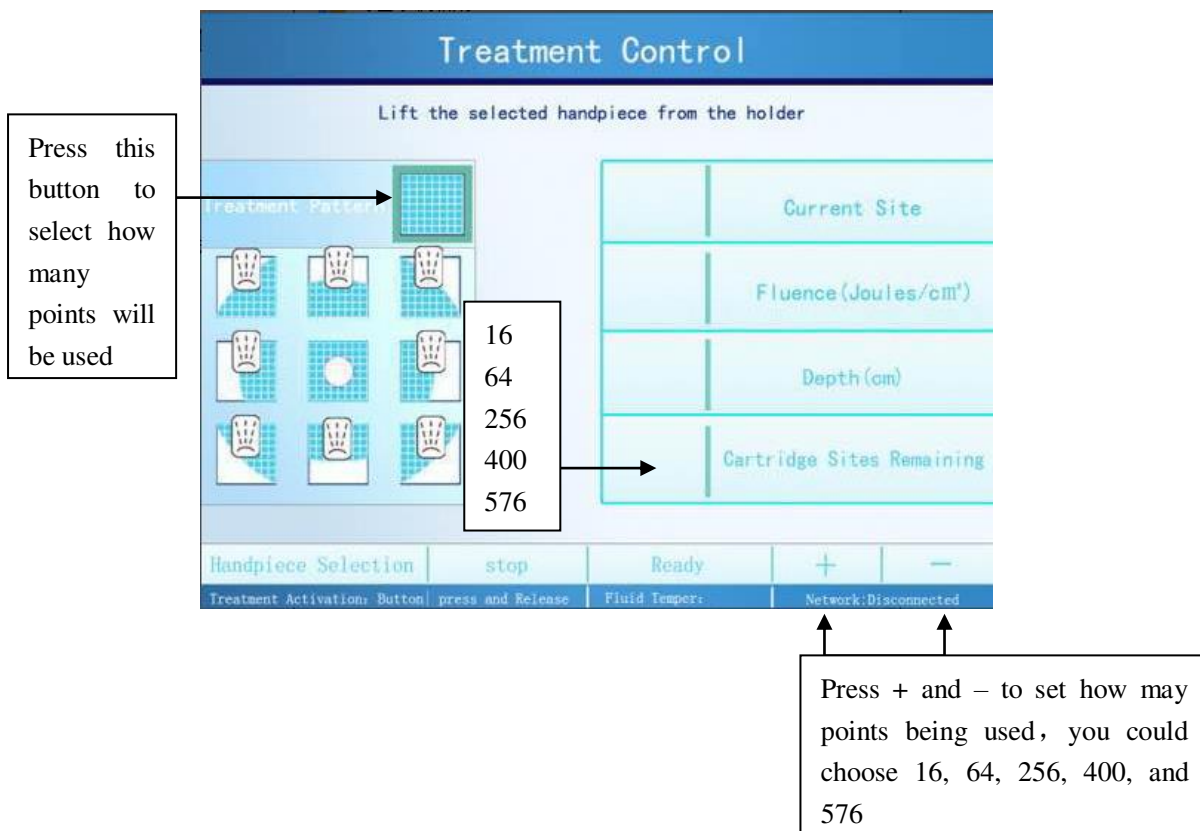
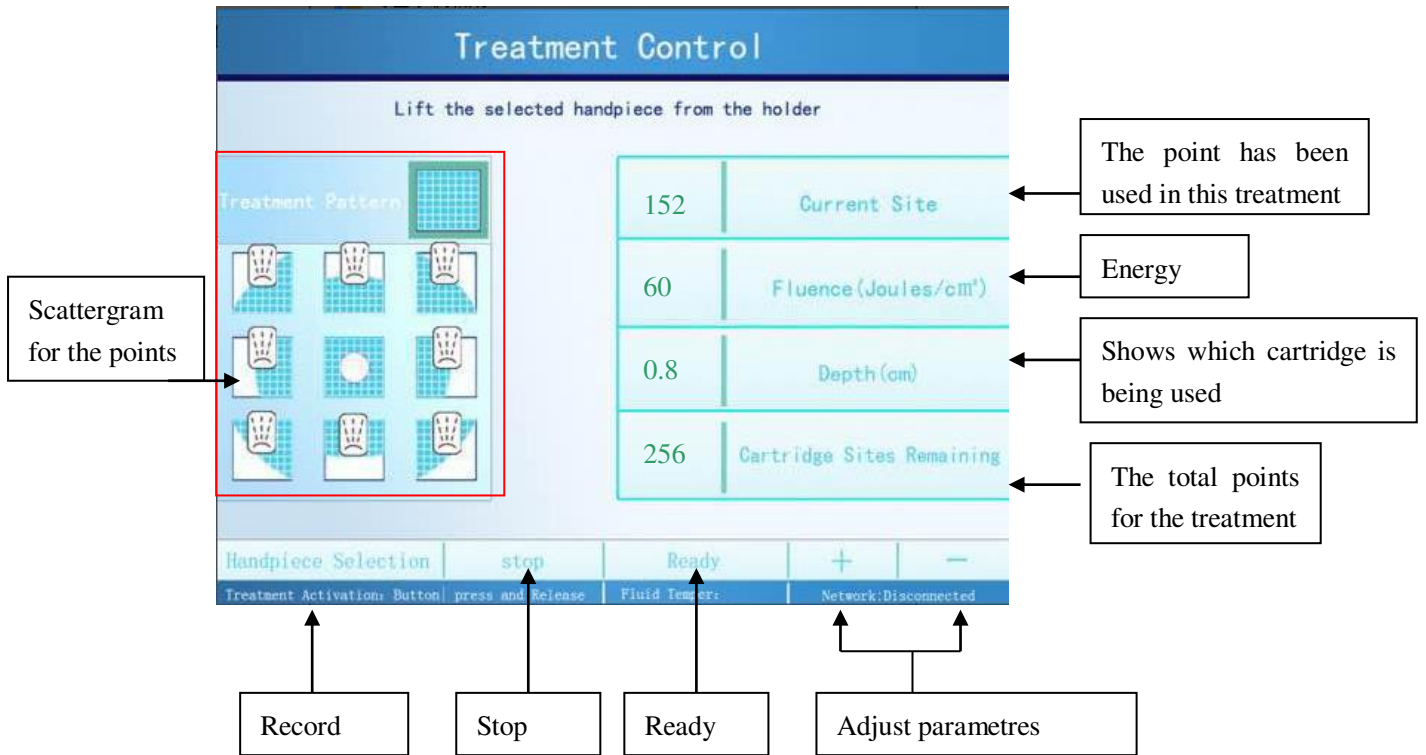


Match all the hole to connector,
then connect the cartridge



Drag the cover to make the
handpiece line out. Then
insert to the Machine
connector.

Interface guider:





Interface Guider:

1. Set the Scatter gram and points according to how fat the client is.
2. Set the energy according to how fat the client is. (We suggest to start the energy from 35 or 40J, if clients could accept, then you can enhance the energy)

Matters need attention:

1. Apply cooling gel on the treatment area
2. Please keep the cartridge on the treatment area until one shoot treatment has been finished

Indication:

1. Pregnant Women.
2. The people who has surgery
3. The people who wear Cardiac Pacemaker
4. Hernia Patients
5. Fat thickness less than 2.5cm