

USER MANUAL



1. Matters needing attention

1. After the machine is turned on, check whether the accessories are complete according to the machine configuration list. If you have any questions, please contact the seller.

2. The machine do not need to fill in any water because it is super air cooling technology.

1.1 Contraindications

1. Not for pregnant women, breastfeeding women, menstrual women
2. Women who are close to menstruation should be cautious, which may cause early menstruation or abdominal cramps.
3. Metal or electronic equipment implantation (pacemaker, defibrillator, neurostimulator, drug pump, etc.) is prohibited.
4. It is forbidden for patients with major diseases such as malignant tumors and cancer.
5. It is forbidden for patients with heart disease, arrhythmia, epilepsy, severe hypertension, and diabetes.
6. It is forbidden to do in areas with artificial fillers.
7. It is forbidden for major surgery patients, and it can also be used according to the recovery situation and after consulting the doctor's opinion.
8. Do not operate the abdomen when you are full, at least one hour after meals.
9. Try to avoid ribs when using
10. Before use, the metal objects worn on the body must be removed. When using, avoid the metal objects on the clothes.
11. People with too thick fat layer are not recommended to use this device. This device is mainly for muscle tissue training. For people with too thick fat layer, the energy can hardly reach the muscle layer to cause muscle contraction and affect the effect. It is recommended to dissolve the fat before proceeding. do.

1.2 Safety

1. When the power plug is dirty, please wipe it clean in time and make sure that there are no foreign objects before connecting to the socket.
2. After plugging in, do not touch the power plug at will, and do not pull the power cord forcefully.
3. Do not touch the power cord and power plug with wet hands.
4. Do not forcefully impact the machine or the surrounding parts of the power supply.
5. Do not use the machine at high temperatures, and do not place heating equipment near the machine.
6. Don't open the power socket of the machine randomly after starting the machine, it will cause malfunction.
7. If there is smoke or peculiar smell when the machine is in use, please unplug the power and consult after-sales service.
8. Do not touch the lips and eyes when the handle is activated, so as to avoid injury.

1.3 Operation attentions

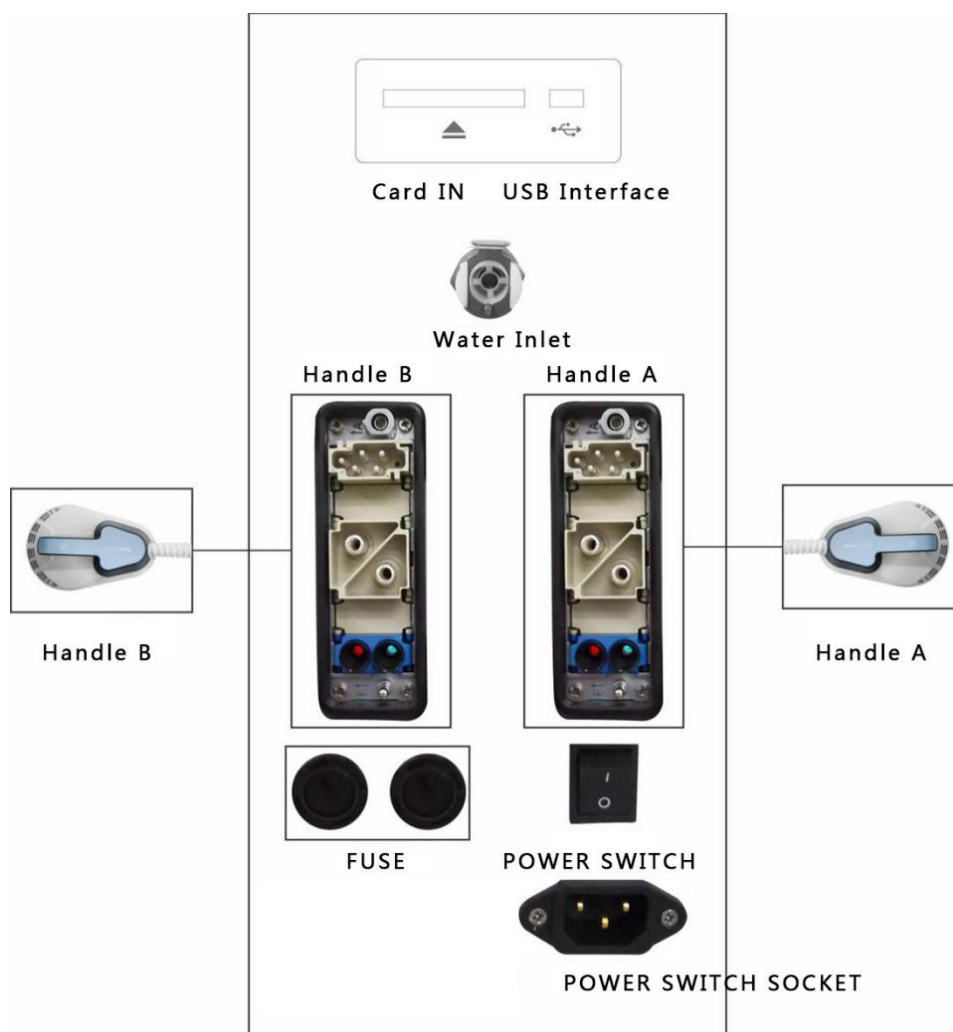
1. Please read the manual carefully, and then use it according to the method in the manual. When the machine is not used for a long time, please unplug the power supply.
2. Before use, you must consult with an expert or use the machine after professional training.
3. When using hand tools, first reduce the intensity, and then gradually adjust to the applicable intensity.
4. When the handle is not in use, it should be placed in the accessory rack to prevent it from falling; when the handle is in the accessory rack, do not pull the connecting wire forcefully.
5. After each use, wait for ten minutes before turning off the power. If you need to replace the operation, please use it after 5 minutes, After using the same operating tool, wait 5 minutes before using it again.
6. If an abnormal condition occurs on the patient while using the machine, please stop the operation immediately and consult an expert.
7. When the machine is abnormal, please reconfirm the instructions and operate; if the abnormality is not resolved, do not disassemble the machine by yourself, but contact the after-sales service for consultation.
- 8.

2. Installation

The machine use unique air cooling technology, no need to add water.

2.1 Connect the handle

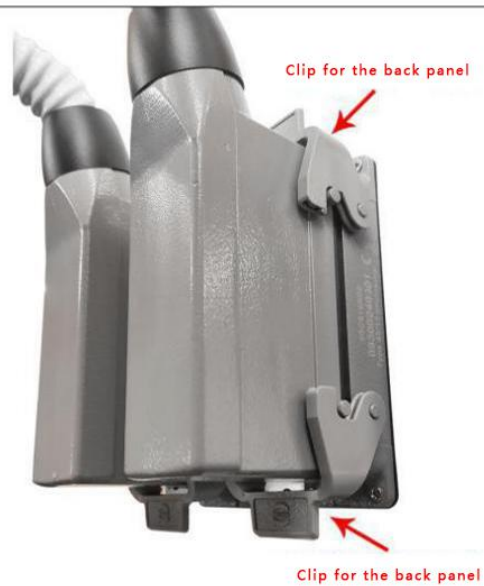
Please connect the handle according to the following instructions.



Connect the handle socket to the back panel socket, the clip should connect tighten to the handle socket



Uninstalled Photo



Installed Photo

2.2 Connect power line

First connect one end of the power cord to the machine tightly, and then connect the other end to the mains socket tightly. Do not reverse it to avoid sparks!

3. Instructions

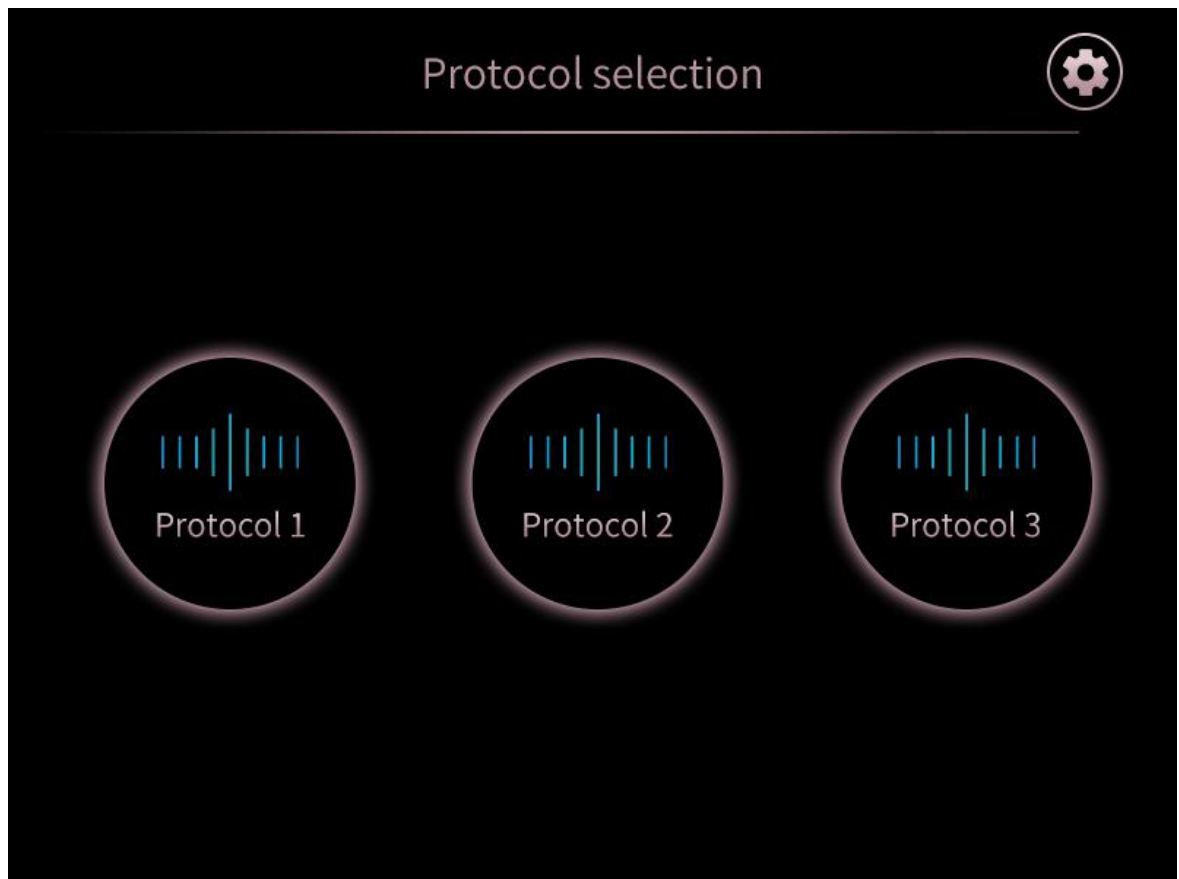
3.1 Interface

Connect the power line, then turn on the power switch. The screen will show the following photo.



After several seconds, the unit will enter in the list interface.

2.1.1 List interface



Mode 1:

There are three vibration modes, which are suitable for the abdomen, and can also be selected according to the actual situation

Mode 2:

There are two vibration modes, which are suitable for the buttocks, and can also be selected according to the actual situation.

Mode 3:

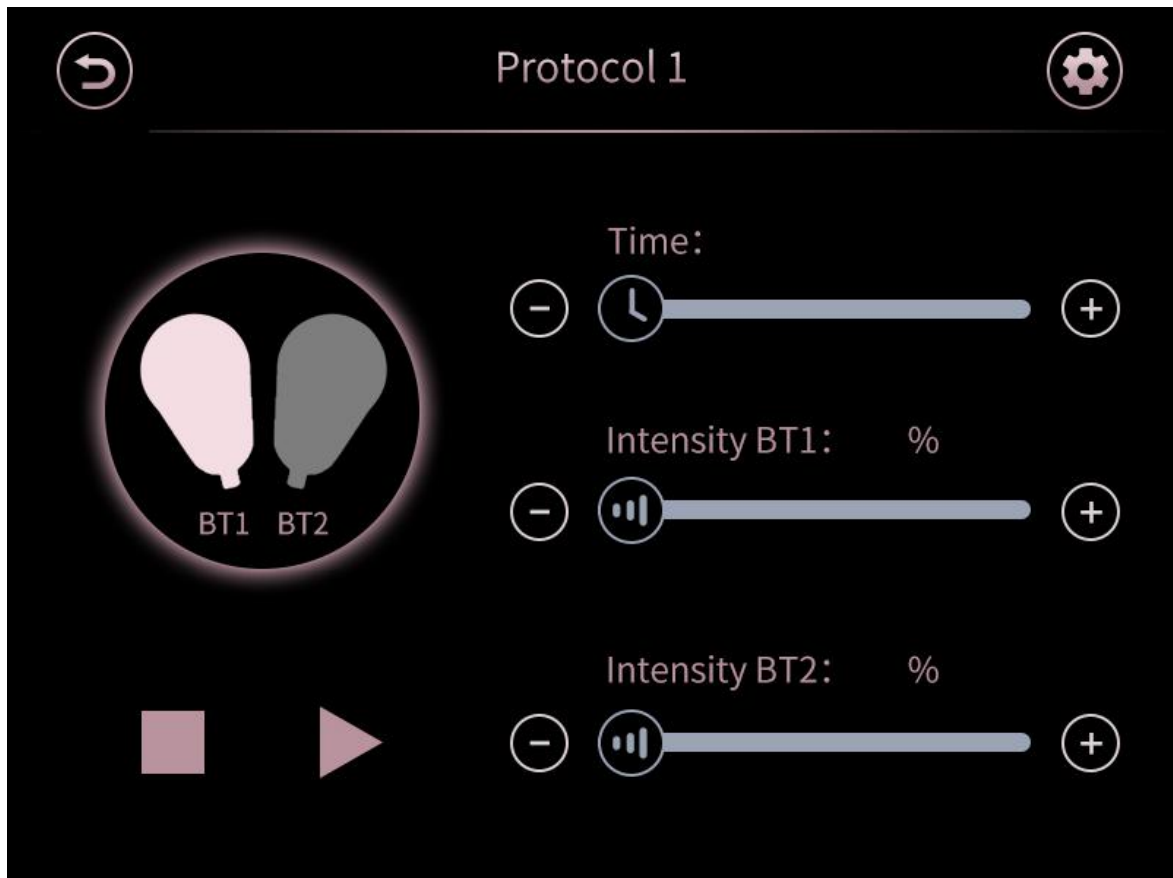
It was applied to the body are which is unknown.

Select working mode to enter working interface

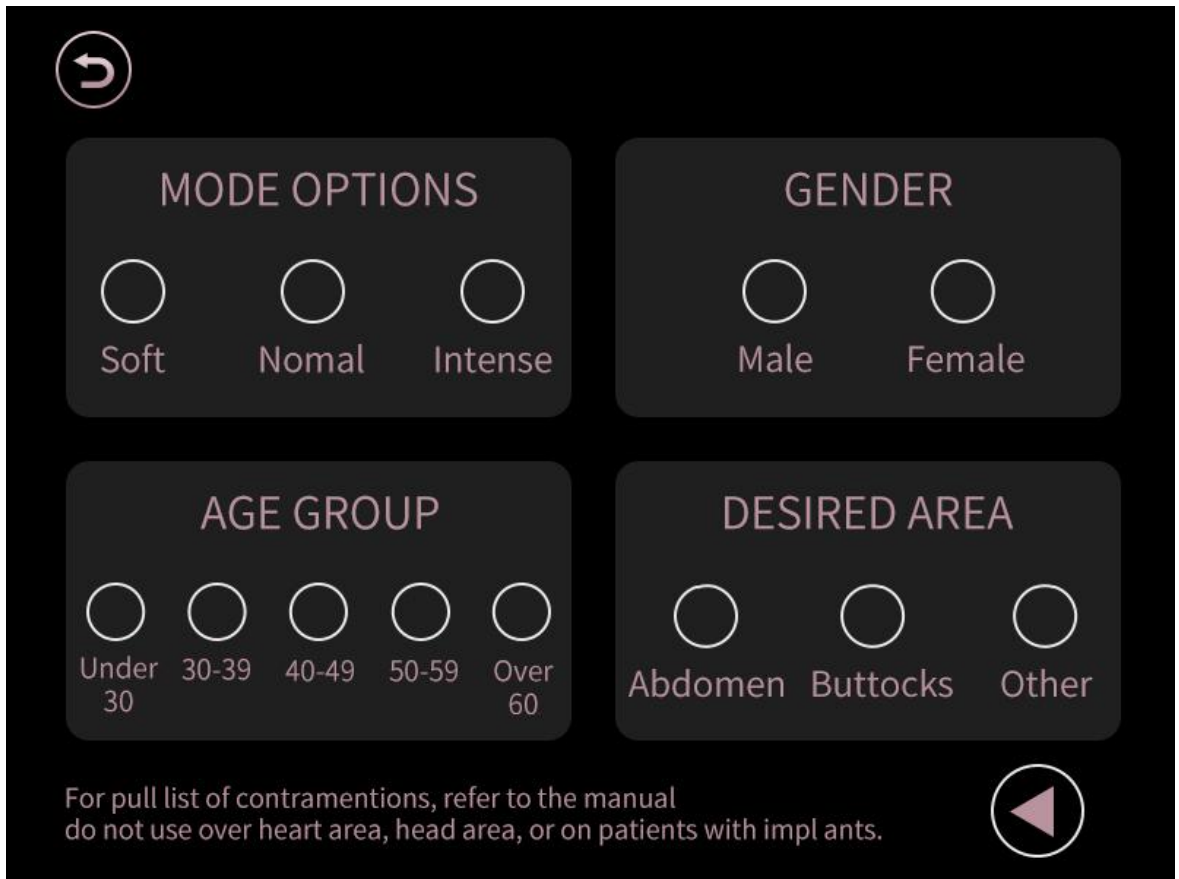
3.1.2 Working interface

Enter the working interface, in this interface, select the hand tool to be used through the independent control switch (the two hand tools are available by default, and you can also lock the A or B hand tool to prevent misoperation.

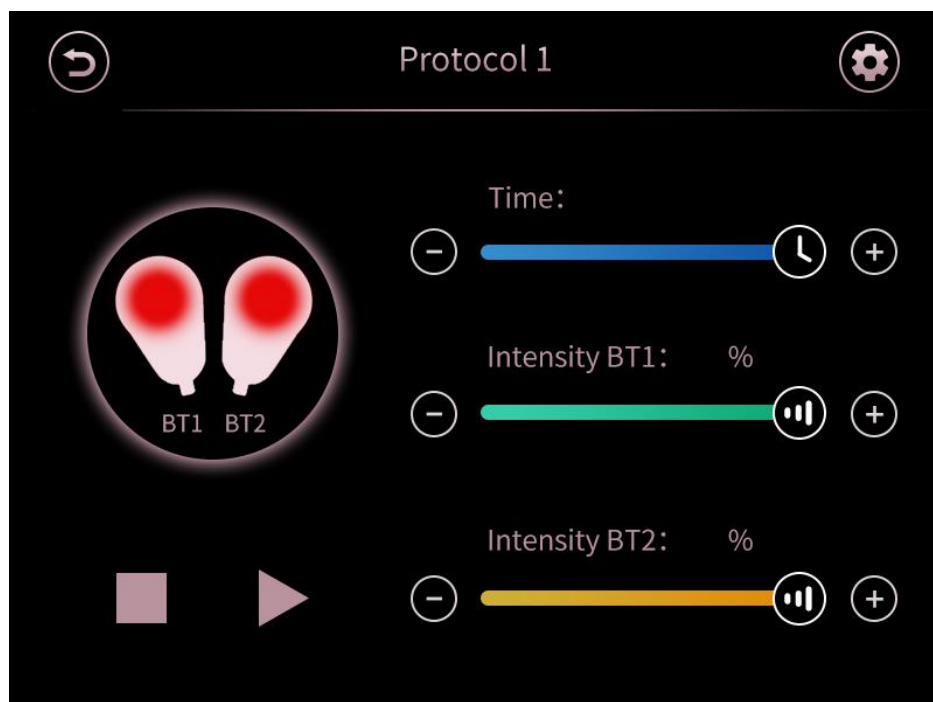
Touch the hand tool icon and the icon turns gray to lock Hand tool. After locked, the parameters of the hand tool are not adjustable and unavailable. The locked hand tool can be used by clicking to unlock it again.)



After selecting, touch the start/pause key to enter the parameter selection interface.



In the parameter selection interface, you can choose the scheme type, gender, age group and location. After completion, touch the confirm parameter selection key to enter the working interface again.

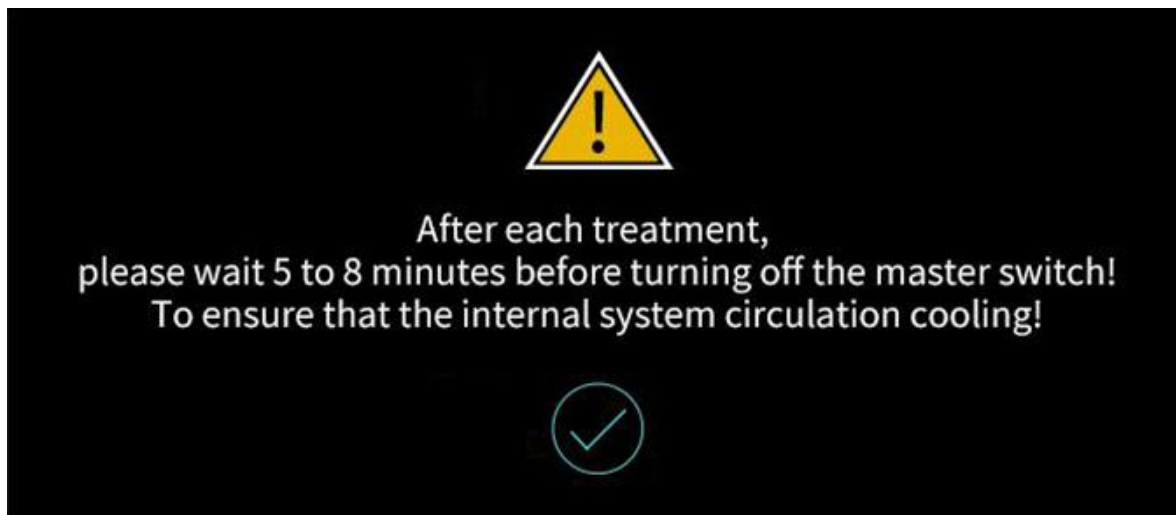


The working time is 30 minutes by default, and then adjust the energy intensity of the corresponding hand tools A and B to perform the operation.

Please adjust the parameters according to the patients feeling, adjust from a low parameter.

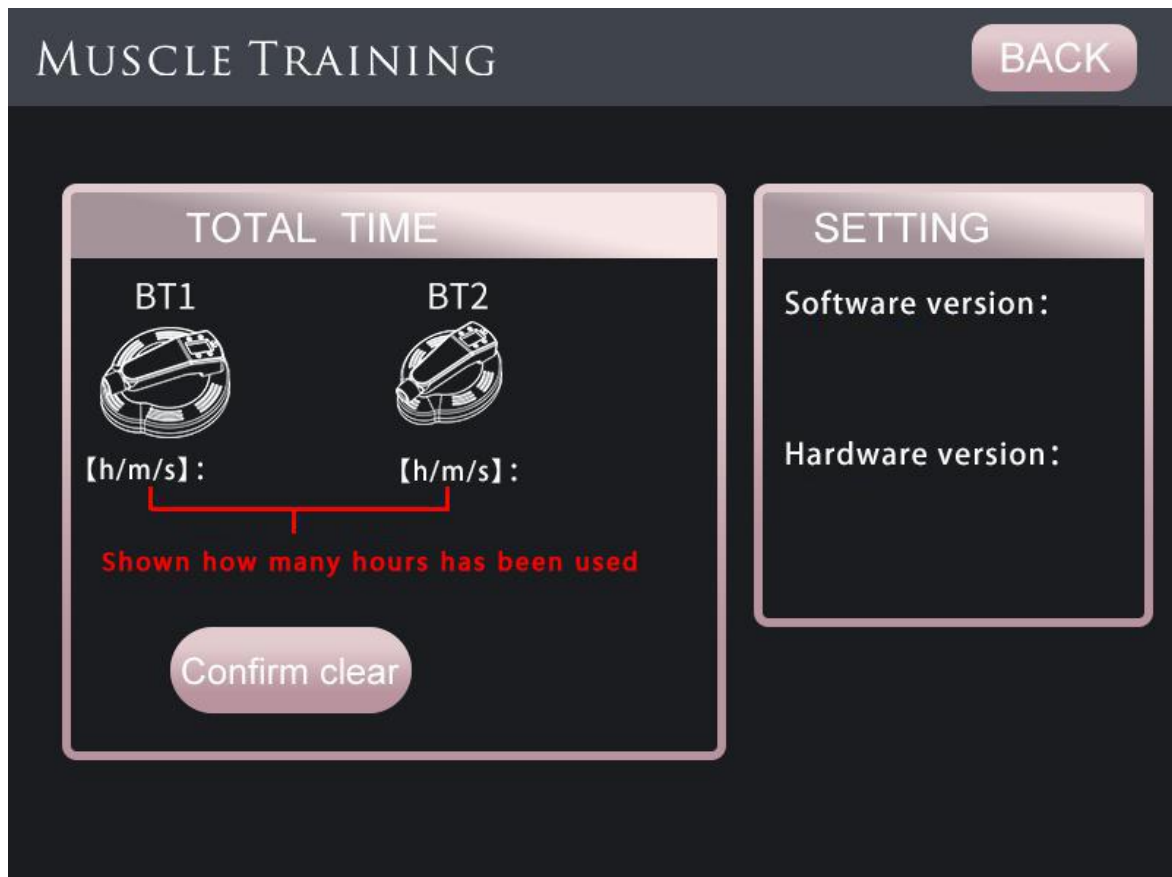
If you need to pause, you can touch the start/pause button to pause the operation. If you need to end or replace the operation, you need to touch to the stop button end the operation.

No matter to pause or stop the operation, it will come a program photo in the below:



3.1.3 Setting interface

In the setting interface(Hardware), we could check how many hours does the handpiece being used.



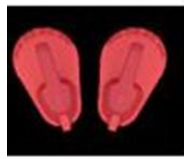
3.1.4 Alarming

①When the following prompt appears on the working interface, it means that the A or B operating



tool is not connected or is not successfully connected (for example, the connection position of the rear cover is not locked), please connect the operating tool, the card position is locked, and the interface alarm prompt disappears. Open to use.

②When the following alarm icon appears on the interface, it means that the operating hand tool utilization rate has reached 80% (120 hours). Click the alarm icon to view the current hand tool utilization rate in detail. When it reaches 100%, the hand tool needs to be replaced. (Each hand tool can be used for approximately 150 hours)



Press the button to check the lifetime of the handle



Note: Please adjust the interface parameters as needed, and adjust from the lowest according to the customer's acceptability.

After use, wait for 10 minutes, press and hold the switch on the front of the machine chassis, and click the interface to confirm shut down



3.2 Suggestion

Warning:

It is forbidden to operate on metal parts in the body. Metal objects worn on the body must be removed before use. When using, avoid metal objects on clothes.

Mode 1:

Apply to the abdomen There are 3 vibration modes (shrinkage, super shrinkage, recovery). When in use, it takes about 5 minutes to cycle, and it will pause when switching.

Mode 2:

Suitable for hips There are 2 vibration modes (shrinkage, recovery). When in use, it takes about 3 minutes to cycle, and it will stop and rest when switching.

Mode 3:

When you are not clear about the treatment area

How to use:

When using, the operating hand tool is close to the abdomen, buttocks or other operating parts, and the operating hand tool is fixed with a strap, setting parameters, and adjusting the energy, then it can be used.

note:

1. One time use for 30 minutes, 6 times is recommended as a course of treatment (2 times a week is recommended).
2. The energy is adjusted according to the tolerance of the guests, it is recommended to adjust from 20%, and it is recommended to adjust the energy to 20% in the first 10 minutes It is recommended to adjust the energy to between 50% and 70% in the middle 10 minutes, and it is recommended to adjust the energy to between 70% and 100% according to the customer's tolerance in the next 10 minutes.
3. After using the operating hand tool, wait 5 minutes before using it again. After each use, you need to wait for 10 minutes before turning off the power.

4. Maintenance

This equipment is mainly composed of precision optical machines or electronic machines, and its maintenance and repair should comply with the general regulations for precision optical machines and electronic machines. Strictly prevent bumps, squeezing, and vibration during storage and use.

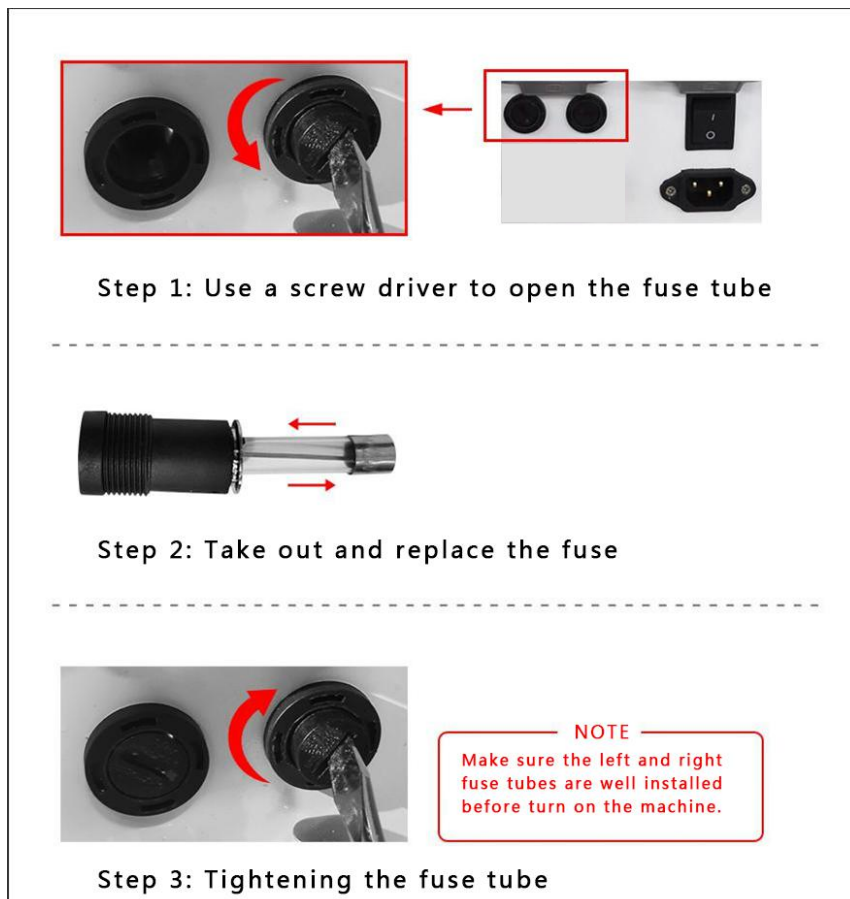
After each use, you need to wait for ten minutes before turning off the power. If you need to change the operation, please use it after 5 minutes. An operating hand tool, after each use, you need to wait 5 minutes before you can use it again.

It is recommended that after each use, the accessories and the host should be cleaned with a clean wipe/wet cloth, and placed in a cool and dry place. The accessories frame and other panels are made of acrylic material, and alcohol is forbidden to wipe.

4.1 common problems

1. Fuse replacement:

When the machine cannot be turned on, you can try to solve it by replacing the fuse. If you can't solve it, you can contact after-sales personnel.



5. Specifications

Items	Parameters
Handles	Independent 2 handles
Technology	HIFEM
Display	10.4 touch screen
Power	2800W
Voltage	100-240V AC, 10A, 50/60Hz
Size (CM)	132*63*67CM
Gross weight (KG)	73KG

6. Spare parts List

No	Spare parts	No
1	Main Unit	1
2	Power supply line	1
3	Handles	2
5	Bandage(Long Medium small)	1
6	30A fuse	10
7	Screw driver	1